

LD57



Unlensed Low Glare LED Wall Light

Data sheet - Page 1

Specially produced for a bulwark on a yacht, the LD57 was designed to have no glare. The LED is hidden from view by a black anodized shield and whilst the lack of a lens means output is lower, it is adequate for gentle deck and steplighting without any glare from the lightsource. We recommend the LD57 be run at 700mA (LD57-700).

Key Features

- LED deep recessed within a black anodised body for no glare
- No optic or reflector
- Minimal aesthetic
- Typical 93 CRI in 3000K warm white
- No visible fixings. Options include spring fixing clips or O-rings and a first fix sleeve
- Integral anti-wicking barrier increases protection against moisture ingress due to incorrect IP rated cable connections
- Available with Switch, 0-10V, DMX, Dali or Mains dimmable drivers

Specification

Applications



LED type

1 x Cree XPG2

Colour temperature

2700K** / 3000K | 5000K

Drive Current (mA)	350	500	700	350	500	700
LED power* (W)	1.2W	1.7W	2.4W	1.2W	1.7W	2.4W
CRI (typical)	93	93	93	75	75	75
Forward voltage (V) ₁₀₀	3.0V	3.2V	3.4V	3.0V	3.2V	3.4V

LED lifetime (to 70% lumen maintenance)

50,000hrs at a max ambient temperature of 35°C (if specifying fitting in ambient temperatures of up to 45°C run at 500mA max, LD57-500)

Materials

Black anodised aluminium body, Machine finish
316 stainless steel bezel (other options available)

Glass

5mm thick borosilicate

Wiring

Comes pre-wired with 2 core 100mm lead, can be specified with up to 10m at extra cost

IP rating

IP68 - Not for permanent submersion (for permanent submersion applications use LD242A)

*LED wattage includes losses associated with using an 85% efficient driver

**2700K lumen output is 12% lower than the 3000K figure listed

4000K lumen output is 14% higher than the 3000K figure listed (80CRI)



Design: DesignPlus Light Project: Private Residence Product: LD57 square special

LD57

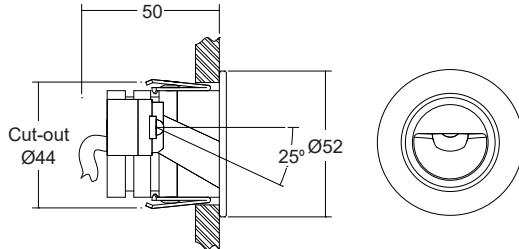


Unlensed Low Glare LED Wall Light

Data sheet - Page 2

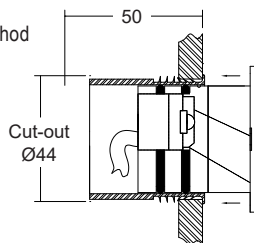
Dimensions and Fixing Options

/SC - Spring clip fixing



/476 - 'O' rings and sleeve

A more robust and water tight method of fixing, for exterior applications



(Dimensions in mm)



Order Codes and Options

Product code	LED colour	Finish	Fixing
LD57 - 350 - 500 - 700	<input type="text"/>	<input type="text"/>	<input type="text"/>

Example: LD57-500 / LW30 / Stainless steel / 476

Product codes with output options

1.2W LED at 350mA	LD57-350
1.7W LED at 500mA	LD57-500
2.4W LED at 700mA	LD57-700

LED colour options

LED colour options	Suffix
Extra Warm White (2700K)	/LW27
Warm white (3000K)	/LW30
Cool White (5000K)	/LW50
Blue	/LB
Green	/LG
Red	/LR
Amber	/LA

Bezel finish options

Stainless steel 316
 Polished stainless steel (passivate for marine environments)
 Paint finish white / black / RAL
 Solid bronze or antique bronze (flamed solid bronze)

Fixing options

Spring clips	/SC
First fix sleeve and O-rings	/476

Use with 350mA, 500mA or 700mA constant current LED drivers

We have a wide range of dimmable LED drivers, 0-10V, DMX, DALI and Mains dimmable. Please see the downloads section on our website:

To run 1-14 LD57-350 in series use a TXDEL350D (0-10V dimmable)

To run 1-14 LD57-500 in series use a TXDEL500D (0-10V dimmable)

To run 1-13 LD57-700 in series use a TXDEL700D (0-10V dimmable)